

vintage cellar

BORDEAUX
EN PRIMEUR 2025

*Vintage of
Precision and Elegance*

As every year, our experts have been on the ground in Bordeaux to discover the new **2025** vintage and taste the wines firsthand. They have returned with their early impressions, along with a selection of wines that particularly stood out.



With weather conditions close to ideal throughout the season, 2025 gave the vineyard the balance and stability needed to produce wines of freshness, precision, and elegance. Healthy fruit, smooth ripening, and natural harmony have shaped wines that already show remarkable composure. Beyond its early promise, 2025 reveals a vintage with real personality. There is a sense of measure throughout, combined with an immediate charm that makes the wines compelling from the very first tastings.

There is also something quietly special about Bordeaux vintages ending in 5. These years often leave a lasting impression, remembered not only for their quality, but for their character and the emotion they bring in the glass. Once again, 2025 seems to carry that same potential.

This is *where the magic of En Primeur begins*: the opportunity to discover a vintage at its very beginning, to follow its evolution, and to secure wines while their story is still being written. For collectors, it is a rare moment to access exceptional wines at their source and to build a cellar with intention.



Our Expert Insights

General Impressions & Market Perspective

The 2025 vintage stands out for its drinkability, balance, and transparency of terroir. More than a vintage built on power, it leans toward precision, accessibility, and finesse. From a market perspective:

- These wines are likely to appeal strongly to classic Bordeaux collectors.
- Their approachable style may make them attractive for earlier drinking windows.
- Pricing will be key, particularly in a market that has become increasingly selective.

Early indications suggest release prices may come in slightly above 2024, making price positioning a crucial factor in the campaign's success.

Left Bank

Pauillac & Saint-Estèphe

The Left Bank wines showed impressive consistency, with Cabernet Sauvignon performing particularly well.



Lynch-Bages delivered its signature graphite structure, complemented by blackcurrant and cedar. The tannins are firm yet polished, giving the wine a precise Pauillac identity.

Pichon Baron stood out for its depth and control. Dark fruit and tobacco notes are supported by a dense yet refined structure – powerful, but carefully restrained.

Pichon Longueville Comtesse de Lalande offered a more lifted and perfumed style, with red fruits, floral notes, and remarkable finesse. Its silky texture makes it one of the most elegant wines of the appellation.

Pontet-Canet showed purity and vibrancy, with expressive fruit and a natural sense of energy that reflects the estate's continued evolution toward precision.

Mouton Rothschild impressed with its concentration, exotic spice, and layered complexity. Rich, yet balanced by freshness, it is a wine built for ageing.

Montrose, a benchmark in Saint-Estèphe, is structured, mineral, and deeply focused – a wine designed for the long term.

Cos d'Estournel presented a more opulent profile, supported by a firm backbone.

Beychevelle offered a refined and approachable expression of Saint-Julien, driven by elegance and balance, with the potential for earlier enjoyment without sacrificing complexity.

Right Bank

Pomerol & Saint-Émilion

The Right Bank in 2025 shines through the purity of its fruit and its textural finesse, with Merlot showing excellent balance.

Cheval Blanc was one of the wines of the vintage – ethereal, complex, and seamlessly integrated, with remarkable precision and length.

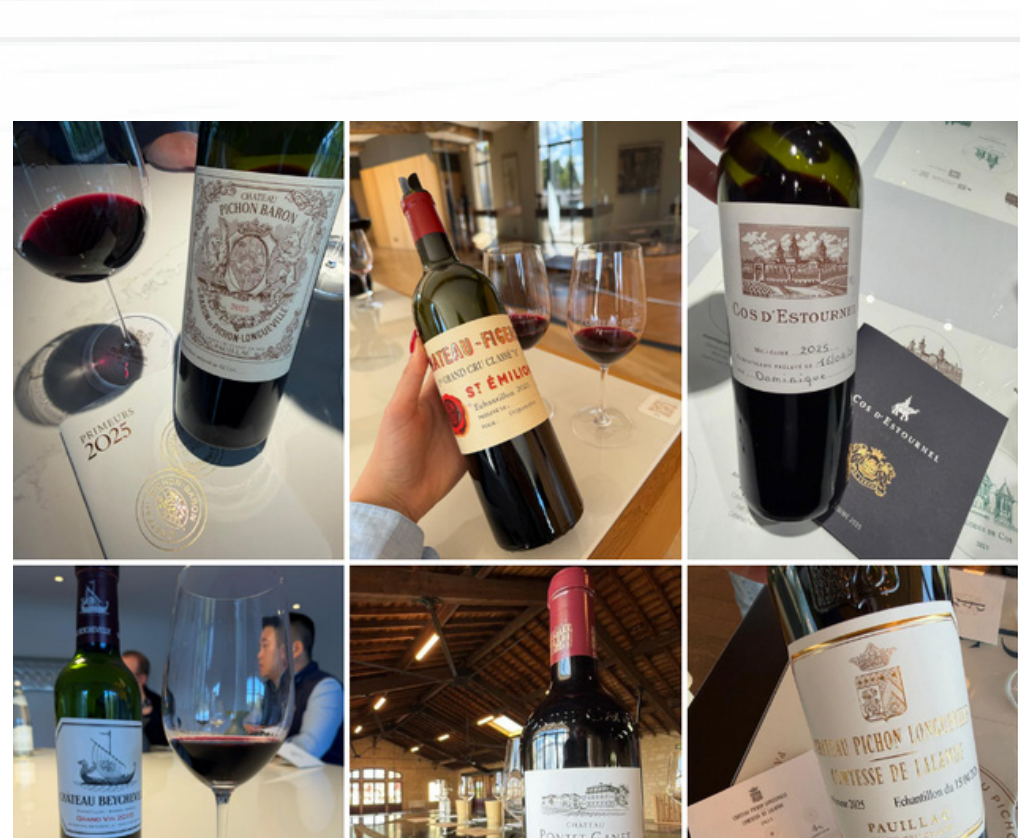
Figiac revealed an elegant, structured profile, driven by Cabernet Franc and Cabernet Sauvignon. Fresh and linear, it offers a refined and intellectual expression.

Canon delivered a precise and mineral style, with red fruit and fine tannins reflecting its terroir with clarity.



L'Evangile combined richness and control, with velvety tannins and depth balanced by freshness.

La Conseillante showed a beautifully polished profile, with floral aromatics, silky texture, and great charm.



At this early stage, Bordeaux 2025 presents itself as a vintage defined by balance, clarity, and composure. Its strength lies not in power alone, but in the precision with which each wine expresses its identity.

If these first tastings are any indication, **2025** may become a vintage appreciated as much for its style as for its quality. For collectors, it represents exactly what makes En Primeur so compelling: the opportunity to secure wines of character and distinction at the very beginning of their journey.

Select Your Favorite Châteaux

Indicate the châteaux you wish to follow, and we will inform you as soon as their releases become available.

Set Your Favorite